

---

THE  
NEW  
SCHOOL

# TISHMAN ENVIRONMENT AND DESIGN CENTER



# ANNUAL REPORT

## 2016-2017

---

TISHMANCENTER.ORG

## DIRECTOR'S MESSAGE



At the Tishman Environment and Design Center, we are committed to creating a more just and sustainable world. As the hub for sustainability at The New School, our work and projects are based in the understanding that social justice and equity are essential to achieving true sustainability, and that can only be achieved by working with communities. We work with students, faculty, and staff from across The New School to leverage their unique strengths and talents to achieve our mission of advancing design, policy, and social justice solutions to environmental issues in collaboration with communities.

Following the presidential election in November 2016, the new Administration has unilaterally withdrawn from the Paris Climate Accord and rejected President Obama's Clean Power Plan. These choices along with the dismantling of long-standing environmental rules and regulations that protect air, land, and water, undermine the nation's standing in the world and our ability to work with global partners to advance a just and equitable society. The effects of these decisions will be borne overwhelmingly by the poor and communities of color within this country, and by poor and developing nations across the world. It is now up to both civil society and the private sector in this country to ensure that this doesn't happen.

In the wake of these crises, The New School and the Tishman Center have re-invigorated our commitment to advancing a just society, addressing climate change and its impacts, and preparing young people for the future they will inherit.

This year we built momentum in our key research issue areas, which we have been developing since the Tishman Center's relaunch on Earth Day 2015. We began to lay the foundation for expanding sustainability learning opportunities and outcomes at The New School, and we partnered with other offices on campus to "walk the walk" of sustainability. We are grateful to our partners on campus and in the community for their support, dedication, and enthusiasm, and we look forward to sharing our progress in the next year and beyond.

### **MICHELLE DEPASS**

**DIRECTOR, TISHMAN ENVIRONMENT AND DESIGN CENTER  
TISHMAN PROFESSOR OF ENVIRONMENTAL POLICY AND MANAGEMENT  
DEAN, MILANO SCHOOL OF INTERNATIONAL AFFAIRS, MANAGEMENT, AND URBAN  
POLICY**

# WHAT WE DO

## RESEARCHERS FOR THE RESISTANCE

The Tishman Environment and Design Center, founded in 2005, fosters the integration of bold design, policy, and social justice approaches to environmental issues in order to advance a just and sustainable society.

The Tishman Center addresses the increasingly urgent need to integrate design and environment to confront climate change and its social impacts.

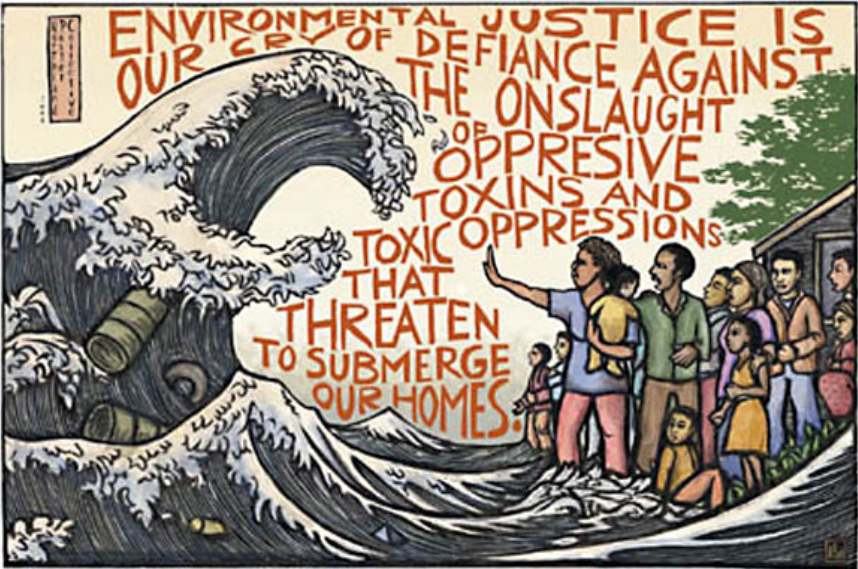
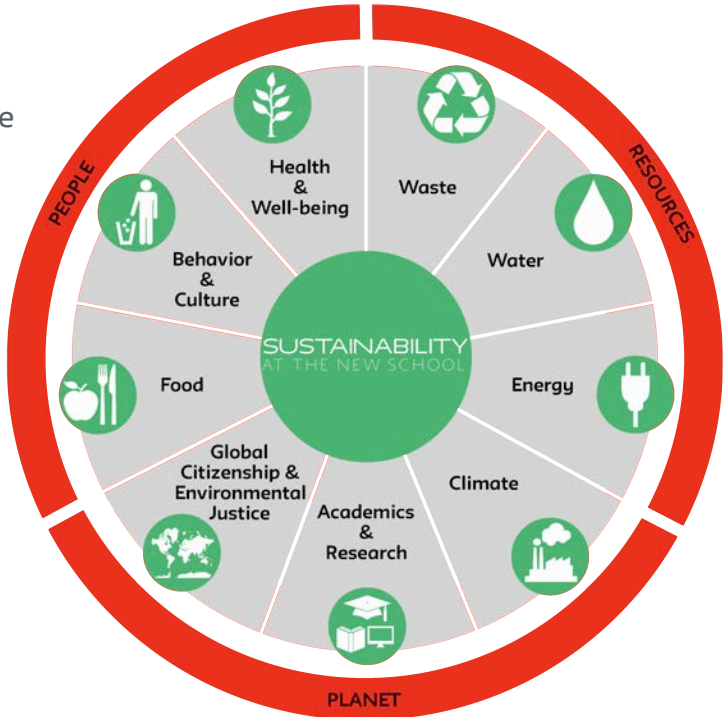


Image by Ricardo Levins Morales

## ADVANCING CLIMATE AND ENVIRONMENTAL JUSTICE

The Tishman Center aims to serve as a resource center for climate and environmental justice research and practice, with a specific focus on deep engagement with underserved communities. We serve as researchers for social and environmental justice grassroots resistance, putting theory into practice through our “think-act” model. The Tishman Center offers technical support to community-based organizations, advocates, and policymakers on the front lines of these movements, with an emphasis on supporting the co-production of inclusive, bottom-up approaches that amplify the knowledge and expertise of these communities.



## SUPPORTING PROGRESSIVE INNOVATION FOR SUSTAINABILITY

The New School has a rich record and deep knowledge in the design and social science fields and are well-positioned to critically address the most complex environmental issues of our time. At the Tishman Center, we create opportunities that bring together the diverse talents of experts, faculty and students from across our schools of design, public engagement, jazz, music, drama, liberal arts, and social research to develop creative, interdisciplinary solutions and new possibilities for change.

## CREATING JUSTICE AND SUSTAINABILITY AS CORE LITERACIES FOR THE 21ST CENTURY

By incorporating climate action and sustainability grounded in social justice into our campus culture, The New School is mobilizing 14,000 students, faculty and staff to have a positive impact on our community and the larger society. The Tishman Center's role is to educate and prepare students through experiential learning to be leaders in this change toward a more just and sustainable society. Our intention is that students graduating from The New School will be able to demonstrate deep knowledge of environmental issues, a heightened awareness of their social justice implications, and a measure of responsibility for taking action.



Suma Balam, MA Strategic Design Management, takes the New School Sustainability Pledge during Earth Week 2017.

## WHO WE ARE



### **MICHELLE DEPASS**

#### **DIRECTOR**

Michelle is Dean of the Milano School of International Affairs, Management, and Urban

Policy and Tishman Professor of Environmental Policy and Management. She joined The New School in 2013 coming from the Environmental Protection Agency, where since 2009 she had served as Assistant Administrator for International and Tribal Affairs.



### **ANA BAPTISTA**

#### **ASSOCIATE DIRECTOR**

Ana is an Assistant Professor of Professional Practice and Chair of the Environmental Policy and

Sustainability Management program at the Milano School. She grew up in the Ironbound community in Newark, New Jersey, and has spent her career advocating for environmental justice.



### **YVONNE WATSON**

#### **ASSOCIATE DIRECTOR**

Yvonne is the School Associate Dean in the School of Fashion at Parsons School of Design.

As an Associate Dean, she works closely with the School Dean in leading the day-to-day management and evaluation of faculty and support staff, and oversight of budget and facilities planning within the school.

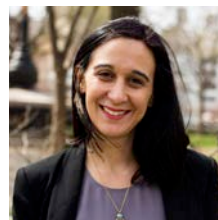


### **MOLLY JOHNSON**

#### **UNIVERSITY SUSTAINABILITY ASSOCIATE**

Molly is responsible for engaging students,

faculty, and staff to support initiatives that bolster a campus-wide culture of justice-oriented sustainability at The New School.



### **ADRIENNE PEROVICH**

#### **MANAGER OF OPERATIONS AND EXTERNAL AFFAIRS**

Adrienne is responsible for

overseeing the day to day operations of the Tishman Center, implementing a fundraising strategy for long-term sustainability, and developing and maintaining strategic relationships with external partners.

## FACULTY RESEARCH

The Tishman Environment and Design Center supports innovative, interdisciplinary research designed by New School faculty with a core focus on social justice, climate change, and urban systems. In 2016-2017, seven faculty members received grants from the Tishman Center to support their work.

### STEPHEN METTS

**PART-TIME LECTURER, MILANO SCHOOL OF INTERNATIONAL AFFAIRS, MANAGEMENT, AND URBAN POLICY**

*Mobilizing Maps for Sustainable Communities* built a robust open source mapping resource for local community members in their opposition to further expansion of natural gas infrastructure.



Construction staging area & right-of-way -26" pipeline. Photo credit: Sierra Shamer  
retrieved from: <https://www.frackracker.org/2016/06/introduction-oil-gas-pipelines/>

### TANYA KALMANOVITCH

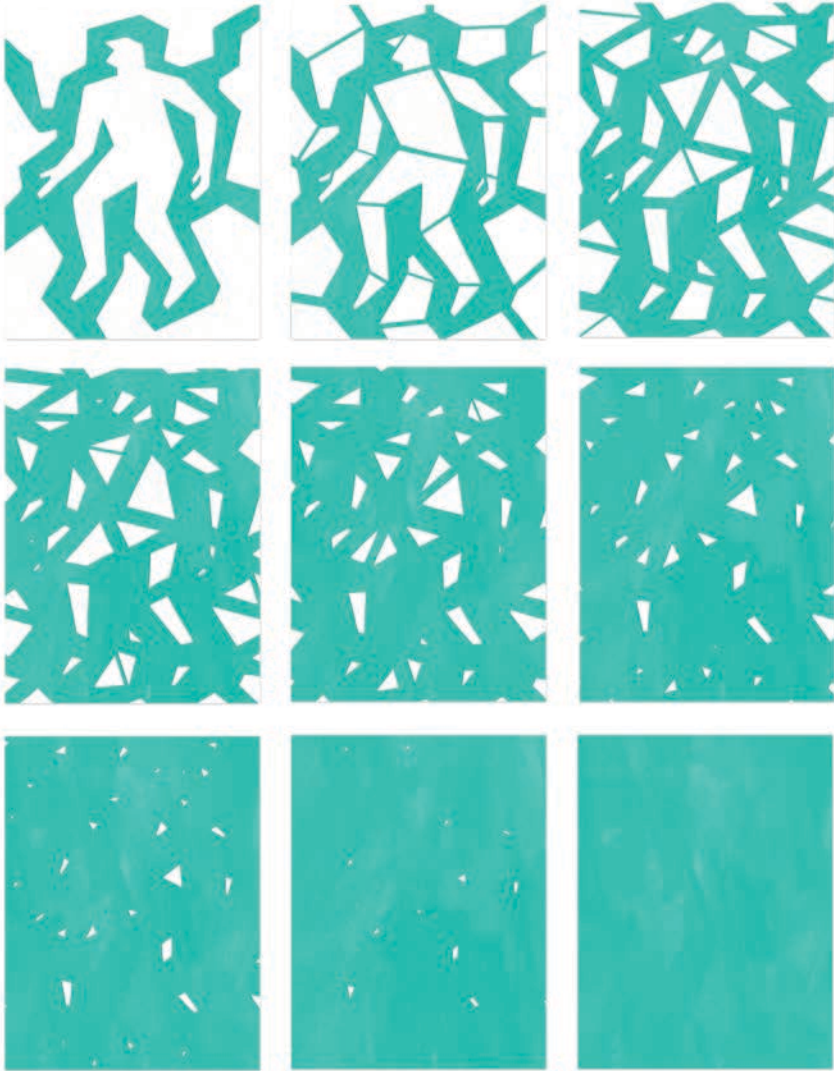
**ASSOCIATE PROFESSOR AT MANNES SCHOOL OF MUSIC**

*The Tar Sands Song Book* is a collection of new open-form compositions and an interdisciplinary performance project that make the impact of tar sands development in Alberta, Canada visible and audible from multiple perspectives.

**WENDY POPP**

**PART-TIME ASSISTANT PROFESSOR, BFA ILLUSTRATION PROGRAM, PARSONS SCHOOL OF DESIGN**

*Beyond Polar Bears: Alternative Visuals for Existing Social Media Platforms that Communicate to New Audiences About Climate Change* collaborated with 350.org to provide visual ideas with which to connect the public and college audiences with engaging digital storytelling artworks that help communicate key climate messages.



An animation for *Beyond Polar Bears*  
Art © Arta Ajeta

**FABIO PARASECOLI**

ASSOCIATE PROFESSOR  
AND COORDINATOR OF  
FOOD STUDIES, SCHOOLS  
OF PUBLIC ENGAGEMENT

**RACHEL KNOPF**

ASSISTANT DIRECTOR OF  
WELLNESS AND HEALTH,  
STUDENT HEALTH  
SERVICES

*Urban Food Security in  
Context: the Lived  
Experience of Hunger at  
The New School* focused on  
issues of food security at  
different levels: the  
students' awareness of the  
needs of their food insecure  
peers, the functioning of food banks from a strategic and service design point of view, the  
systems and social hierarchies that affect food insecurity, and the impact of food policy on  
urban environments.



The New School Food Pantry

**MEHDI SALEHI**

PART-TIME LECTURER, SCHOOL OF ART, MEDIA, AND TECHNOLOGY, PARSONS  
SCHOOL OF DESIGN

**BRIAN MCGRATH**

DEAN, SCHOOL OF CONSTRUCTED ENVIRONMENTS, PARSONS SCHOOL OF DESIGN

*Drones for Refugees* is a drones monitoring system ensuring the safe arrival of refugees. In 2015 alone more than one million refugees crossed into Europe, mostly from Syria, Afghanistan and Iraq. Over the past two years an estimated 8,000 people have lost their lives trying to cross into Europe. Drones for Refugees aims to support their safe arrival.



## **BARENT ROTH**

**PART-TIME LECTURER, BFA INTEGRATED DESIGN PROGRAM, PARSONS SCHOOL OF DESIGN**

*Testing the Waters* designed and developed 23 low cost trawls pulling a floating device with a net on the water's surface to gather data about plastic pollution in the Earth's oceans.



Barent Roth tests two DIY trawl designs with Research Assistants Taina Guarda and Aishwarya Janwadkar.

## **IVAN RAMIREZ**

**ASSISTANT PROFESSOR OF ENVIRONMENTAL HEALTH, EUGENE LANG COLLEGE OF LIBERAL ARTS**

*Addressing Environmental Health Risks through Community Action Research and Local Knowledge: Pilot Study in Williamsburg and Greenpoint, Brooklyn* analyzed how climate variability, extremes and changes interact with social dynamics to impact the health of residents in New York City, particularly communities of color and socioeconomically poor populations.

## STUDENT SCHOLARS

The Tishman Center Scholars program is a competitive grant funding student-designed research and projects related to climate change, environmental or sustainability issues. Projects addressed critical environmental issues generated by the impacts of climate change and other environmental threats to community well-being through the lenses of design, policy, art, and social justice.

### LACHAUN MOORE

#### BFA INTEGRATED DESIGN, '17

*A Mule* is an adaptation of the “40 Acres and a Mule” ideology that was constructed by former African American slaves who, after freed, felt that they deserved to own the land they worked on as enslaved people. This project sought to understand perceptions of cotton and agriculture in the African American community.



LaChaun Moore and Marriele Robinson present their research at “Going Beyond Green,” during Earth Week 2017.

### MARRIELE ROBINSON

#### MS ENVIRONMENTAL POLICY AND SUSTAINABILITY MANAGEMENT, '17

*Community Distributed Generation in New York City: Making Shared Solar a Reality in Sunset Park, Brooklyn* outlines the opportunities and complexities of implementing community shared solar in Sunset Park with a particular focus on strategies that could be employed by UPROSE, a Brooklyn based grassroots organization that advocates for social, racial, economic, and environmental justice.

**COREY CHAO**

**MFA TRANSDISCIPLINARY DESIGN, '17**

*Our Climate Futures: Participatory Governance and Sea Level Rise* developed prototypes of new engagement tools for planners focused on sea-level rise. A partnership with the Regional Plan Association resulted in the development of the Coastal Futures Fellowship, a participatory 360°-video making workshop that grounds high level plans with grounded stories of future climate realities.



Residents of Mastic Beach Village participate in a two-day, participatory 360° video-making workshop facilitated by Corey Chao.

### CURRICULUM

Working closely with the leadership and faculty at all five schools at the New School, the Tishman Center is embarking on a multi-year project to incorporate sustainability learning outcomes that account for the social, political, and economic dimensions of environmental issues into the academic experience of all New School students.

In collaboration with our Affiliated Faculty, the Tishman Center is exploring strategies to uplift existing sustainability-related course offerings, design new methods of engaging students in sustainability learning, and partner with community organizations to provide real-world learning experiences for students. We are developing and delivering opportunities for all students to learn about sustainability in ways that fit and complement their majors and disciplines from jazz to design, liberal arts to social research, and beyond.

In Spring 2017 we worked with Taina Guarda, a graduating student in the Master's program in Environmental Policy and Sustainability Management at the Milano School, to produce a baseline study on sustainability learning already happening on campus. The study mapped learning that is occurring both in the classroom and through extracurricular activities.

Our 2017 cohort of faculty grant winners will design projects to develop curriculum or pedagogy that addresses a set of core sustainability learning competencies.



Tishman Center Affiliated Faculty discuss innovative approaches to embedding sustainability in university-wide curriculum.

## RESEARCH AND PRACTICE

The Tishman Center serves as a nexus between academia and the environmental and social justice grassroots movements, with a specific focus on underserved communities. Drawing on the New School's expertise in design, policy, and social research, the Tishman Center supports this work through community-led participatory research, faculty directed research, and engagement with visiting scholars from grassroots, environmental partners.

In collaboration with our affiliated faculty, visiting scholars from the environmental movement, and community and organizational partners, we have developed a set of integrated, trans-disciplinary research and practice priority areas:

1. Climate and Environmental Justice
2. Food Systems
3. Zero Waste and Circular Economy

## ENVIRONMENTAL JUSTICE

Environmental justice communities are communities of color and low-income communities that bear disproportionate burdens from unjust environmental policies. In the US and around the world, this pattern of marginalization and burden can be seen as the world's poorest and most vulnerable populations face the greatest climate impacts to their health, well-being, and survival.



Professor Ivan Ramirez presents research conducted in partnership with El Puente Leaders for Peace and Justice, a local grassroots organization.

---

## TISHMAN ENVIRONMENT AND DESIGN CENTER

The Tishman Center is committed to working collaboratively and justly with the most impacted and vulnerable communities through relationships of mutuality and respect. As part of this commitment, the Tishman Center is working to educate our staff, faculty, and students in the Jemez Principles and Environmental Justice Principles as a foundation for building relationships founded on an understanding of shared goals and roles. We seek to support and align our work with communities on the front lines and provide a platform for shared learning and the advancement of environmental and climate justice goals. The Tishman Center is a forum to facilitate and raise the profile of justice centered environment and design approaches through community-academic projects, convenings, research, and pedagogy.

Some of our environmental justice partnerships initiated or continued this year include The Center for Earth, Energy and Democracy (CEED), The Center for Urban Environment at Thomas Edison State College, NJEJA, NYCEJA, the Mississippi Chapter of NAACP, and their sister organization One Voice.

### CLIMATE JUSTICE

National and international climate mitigation policies often ignore the social justice and equity implications of climate policies. The differential impacts of climate change are well understood in terms of the disproportionate impacts felt by the most vulnerable communities, particularly communities of color and low-income communities due to increasing intensity and

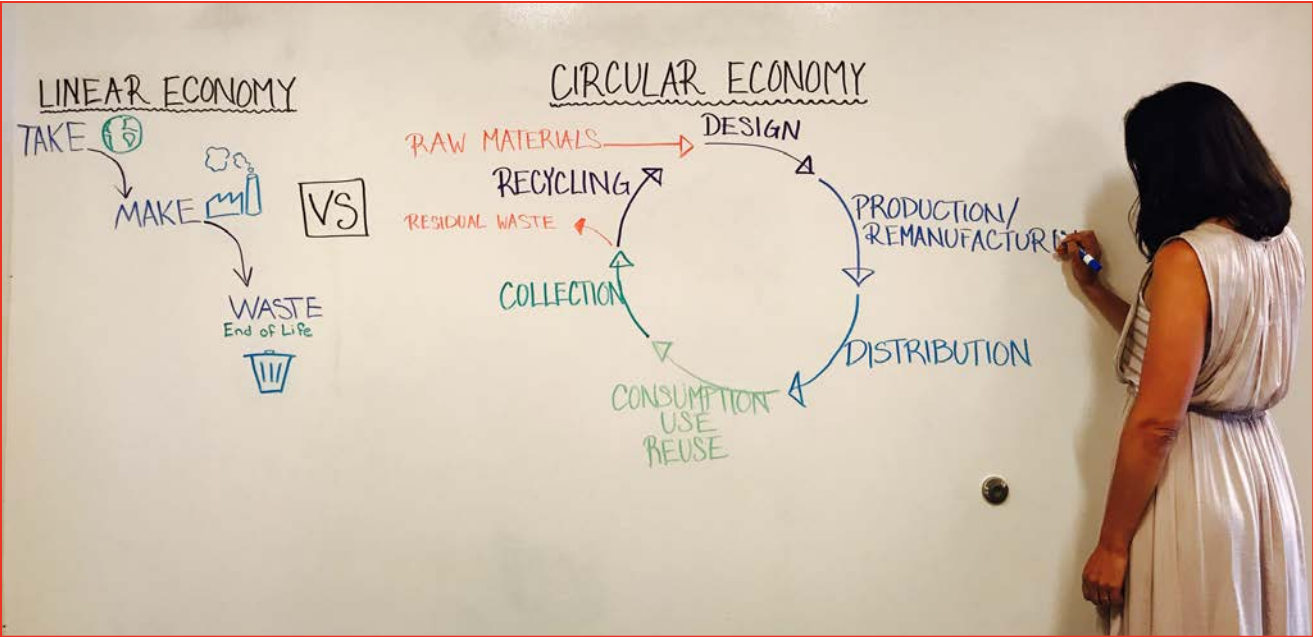


frequency of natural disasters, disease vectors, rising temperatures and sea level rise. But the impacts of proposed climate mitigation and adaptation strategies on these same communities is not as well developed. Decisions about climate mitigation policy are often a product of established interest groups within the environmental sector that lack input from environmental justice communities, advocates, and scholars. This can result in a deprioritization of justice claims in the policy-making process or blind spots in policies that do not account for these concerns.

Some of the climate justice concerns raised by environmental justice communities with respect to climate mitigation policies both nationally and internationally include; access to renewable energy and energy efficiency programs and policies, emissions reductions at the source from power plants, and the promotion of false solutions via technologies with the potential to further harm vulnerable communities. These issues were all central critiques of the US EPA's most significant climate mitigation policy issued under the Obama administration, the Clean Power Plan (CPP).

### ZERO WASTE AND CIRCULAR ECONOMY

Globally we face a mounting waste management and resource depletion crisis. The world is on target to produce 11 million tons of waste per day by the year 2100, tripling today's waste production rate. In 2013, the national recycling rate in the United States was only 34%. Waste disposal facilities are significant sources of greenhouses gases. Neighborhoods where disposal facilities are sited are often home to low-income populations and communities of color- who bear the brunt of the detrimental effects of climate change impacts and air, land and water pollution. This linear system of consumption and disposal requires systemic change in the design, manufacturing and waste management of our consumer goods as well as careful reflection about our consumptive practices overall.



---

## TISHMAN ENVIRONMENT AND DESIGN CENTER

The concept of a “circular economy,” is a whole systems approach to economic behavior inspired by natural systems. A circular economy promotes an economic model in which the practice of efficient resource management drives economic prosperity without compromising human health and the environment, balancing societal needs with the planet’s biophysical capacity to meet those needs. Similarly, Zero Waste is a set of practices and principles that seek to emulate natural systems that do not produce discarded materials. These concepts produce the possibility of reconfiguring our society’s relationship to waste and consumption altogether.

Scaling up zero waste and circular economy strategies could translate into jobs and improved environmental conditions for vulnerable communities that are disproportionately burdened by a throwaway, linear economy. Reducing the rate of consumption as well as the volume and toxicity of products through innovative manufacturing and product re-design, as well as incorporating zero waste practices such as repurposing, recycling, and composting will be integral to achieving a more sustainable and just society .

The Tishman Center’s commitment to zero waste initiatives bring together researchers, practitioners and advocates from various disciplines to consider ways in which we can collaborate to move policies and actions forward that promote Zero Waste and Circular Economy goals with a particular focus on the social justice implications that such a shift in our economic and social models could produce.

This research agenda was created in partnership with GAIA (Global Alliance for Incinerator Alternatives), an international alliance of grassroots organizations whose ultimate vision is a just, toxic free world.



**FOOD SYSTEMS**

The New School has an ongoing commitment to food waste issues both on campus and beyond. The University was a participating partner in the New York City Food Waste Challenge. We have a vibrant, and interdisciplinary interest in Food Studies, Social Justice and Sustainability programs that make the university a laboratory for innovation at the intersection of food, waste and the environment.

The New School Food Studies Program and the Institute of Culinary Education launched a Zero Waste Food Conference in April 2017. This conference explored sustainable methods for producing, distributing, consuming and disposing of food in the environments where we cook and eat. The Conference bridged the gap between research and practice, and draw upon the perspectives of academia, activism, food business, chefs, and food producers in order to synthesize our shared goals and strategies to create a more sustainable food network in the 21st century.

IMAGINE a system where **NOTHING** goes to **WASTE** and materials are **CONSTANTLY REPURPOSED**

**ZERO WASTE FOOD**  
REIMAGINE  
REPURPOSE

a system where the **BYPRODUCTS** of one **ACTIVITY** **BECOME** the **RESOURCES** for **ANOTHER ...**

A CONFERENCE DEDICATED TO ELIMINATING FOOD WASTE  
APRIL 28-29, 2017 NYC

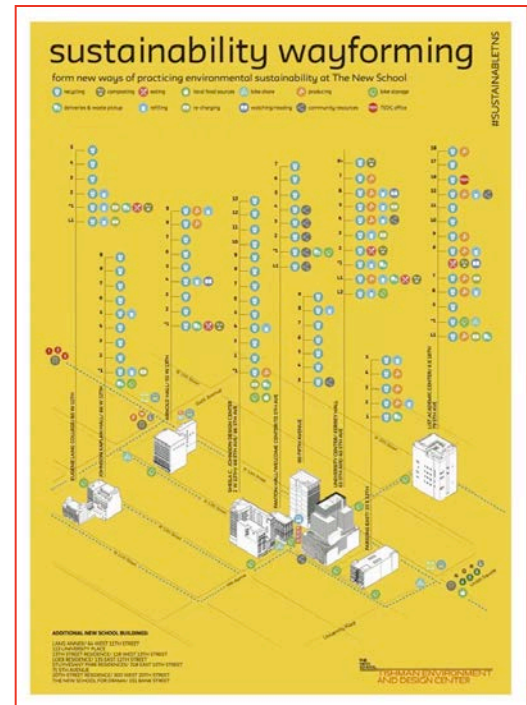
ICE Institute of Culinary Education  
THE NEW SCHOOL

## CAMPUS SUSTAINABILITY

### SUSTAINABILITY WAYFORMING MAP

In Fall 2016, the Tishman Center produced a Sustainability Wayforming map as a tool for students, faculty, and staff to identify the resources available to help them form new, more sustainable ways of interacting with the campus and the community. It identified traditional sustainability resources like places to refill a reusable water bottle, recycle, and lock your bike. It also identified offices that serve as important community resources, places to rest and relax, and places to read and observe.

The Tishman Center is currently partnering with New School Marketing and Communications and New School Buildings to develop an online campus sustainability map.



### WHAT WILL CHANGE

In response to the outcome of the 2016 presidential election, and understanding that the next four years will prove to be unprecedented in the roll-back and dismantling of environmental protections, our blog series What Will Change featured Tishman Center Affiliated Faculty reflecting on the environmental and social justice impacts of the election results from the perspectives of their research, practice, and passion.

### RE-FASHIONNYC

We partnered with Housing and Residential Education to pilot a re-fashionNYC clothing donation bin. Residents of Kerrey Hall were able to easily donate unwanted clothing to the bin in their laundry room, which was picked up by Housing Works. We will work with Housing and Residential Education to expand this program to more residence halls for Fall 2017.



WASTE BIN SIGNS

Responding to comments and feedback from students, faculty, and staff that waste bin signage on campus was confusing or sometimes inconsistent, the Tishman Center partnered with New School Buildings to redesign the signs for recycling, compost, landfill, and battery disposal bins on campus. The icons were drawn by Parsons alumna Vincy Cheung (who also illustrated The New School’s emoji keyboard). The signs were designed by former Parsons student Siwen Li. The new signs were installed around the campus in April and May 2017.



The New School’s redesigned waste bin signage corresponds with New York City’s recycling color scheme and rules.

GOOD AS NEW

The Tishman Center launched our first campus-wide Good As New collection in Spring 2017. Good As new is a reuse and waste reduction initiative that encourages all New School students to donate reusable school supplies and materials at the end of the semester so that these items stay out of landfills, and can be used by other students in the future. Items and materials including wood, metal, plastic, paper, art supplies and tools were collected at drop-off points around campus including building lobbies, the Making Center at 2 West 13th Street, and all residence halls. The materials will be stored and sorted over the summer, then distributed free of cost during Orientation in Fall 2017. Good as New is a collaborative effort with planning and implementation contributions from students, faculty, and staff representing the Tishman Environment and Design Center, the Parsons Making Center, Student Housing and Residential Education, and others.

---

## TISHMAN ENVIRONMENT AND DESIGN CENTER

### FACEBOOK LIVE UNIVERSITY CENTER GREEN TOUR

In October we partnered with New School Buildings and Marking and Communications to lead a public sustainability tour of the University Center shared via Facebook Live. The tour highlighted the operational efficiency and green design elements of the building, which earned LEED Gold certification, as well as

social and community sustainability features. With nearly 3,000 views, this was one of the most popular Facebook Live videos on The New School's page for the 2016-2017 school year.



### THE NEW SCHOOL SUSTAINABILITY PLEDGE

The Tishman Center manages The New School's Sustainability Pledge, a voluntary pledge to introduce small actions into your daily life that will help The New School achieve its sustainability goals. Nearly 200 students, faculty, and staff took the pledge this year. The pledge is available online year-round, and we will continue to promote at key activities during Orientations and Earth Week.



## EVENTS

### ENVIRONMENTAL JUSTICE: THEN AND NOW

**OCTOBER 26, 2016**

Delegates to the First National People of Color Environmental Leadership Summit held on October 24-27, 1991, in Washington DC, drafted and adopted 17 Principles of Environmental Justice. These Principles were created to build a national and international movement to fight the destruction and taking of lands and communities and to secure political, economic, and cultural liberation denied for over 500 years of colonization and oppression. Since then, The Principles have served as a defining document for the grassroots movement for environmental justice.



Left to right: Dean Michelle DePass and Professors Mindy Fullilove, Mia White, Maya Wiley, and Ana Baptista discuss past and present environmental justice issues.

On the 25th Anniversary of the adoption of these environmental justice principles Tishman Center Affiliated Faculty members Mindy Fullilove, Mia White, and Maya Wiley joined Director Michelle DePass and Associate Director Ana Baptista on a panel examining the issues of race and the environment in the 21st Century.

### ON THE EDGE: CONFRONTING THE THREAT OF SEA LEVEL RISE

**DECEMBER 6, 2016**

The Regional Plan Association released a new study: *Under Water: How Sea Level Rise Threatens the Tri-State Region* at a conference hosted by the Tishman Center. The study focuses on the impacts that as little as one foot of Sea Level Rise could have on the states of New York, New Jersey, and Connecticut. The conference featured municipal, county, and state officials; academics; and non-profit professionals to discuss long-term climate adaptation strategies that can be utilized in the New York Metropolitan Region. Panels focused on what lies ahead, confronting long term adaptation, and governing for long term adaptation.

**EARTH WEEK 2017**

**APRIL 15-22, 2017**

Earth Week at The New School is dedicated to championing environmental justice, inspiring activism through artistic expression and design, fostering professional opportunities in environmental sectors, promoting sustainable practices, and advancing sustainability in New York City and the world. Each year the Tishman Center takes the lead in planning and coordinating the week-long celebration with events co-sponsored by a wide range of academic programs, university centers, and student groups.

This year's Earth Week featured over 20 events including tours, panels, films, workshops, hands-on activities, and other awareness-raising programs, reaching an audience of over 1,000 people.



The New School Celebrates Earth Week with performances, speakers, workshops, and research presentations.

## ADDITIONAL PUBLIC EVENTS

### **Book Launch and Panel Discussion: “Ecological and Social Healing: Multicultural Women’s Voices”**

September 8, 2016

\*Co-sponsored by Environmental Policy and Sustainability Management at Milano

### **Social Impact Investing for Sustainability**

September 27, 2016

\*Co-sponsored by Environmental Policy and Sustainability Management at Milano

### **Film Screening and Panel: “After Coal”**

October 3, 2016

\*Co-sponsored by the Milano School of International Affairs, management, and Urban Policy

### **Food Day Panel: The Future of Sustainable Food: Farmers, Producers, Distributors & You**

October 24, 2016

\*Co-sponsored by New School Dining

### **Book Talk: “Beyond The Kale”**

November 2, 2016

\*Co-sponsored by Environmental Policy and Sustainability Management at Milano and Environmental Studies

### **Bill McKibben: On The Fate Of The Earth**

November 10, 2016

\*Presented by The Nation Institute

### **Climate Change and the Future of U.S. Environmental Policy with Rob Verchick**

January 24, 2016

### **Climate Change and Global Justice**

January 31, 2016

\*Co-sponsored by the Studley Graduate Program in International Affairs

### **Resilient Cities, Livable Futures**

March 20, 2017

\*Presented by the Urban Systems Lab and co-sponsored by Environmental Studies

### **Rebuilding or Relocating: How to Respond to Climate Change**

April 5, 2016

\*Presented by the Happold Foundation

### **Indigenous Voices of Resistance**

April 26, 2017

\*Presented by the Indigenous Environmental Network

### **Book Launch: “Doughnut Economics: Seven Ways to Think Like a 21st-Century Economist”**

May 1, 2017

\*Co-sponsored by Environmental Policy and Sustainability Management at Milano

### **Film Screening: “Sacred Water” and “Red Power”**

May 3, 2017

\*Co-sponsored by Environmental Policy and Sustainability Management at Milano and Urban Studies

### **Book Release: “Prairie Rising: Indigenous Youth, Decolonization, and the Politics of Intervention”**

May 4, 2017

\*Co-sponsored by Global Studies

## IN THE NEWS

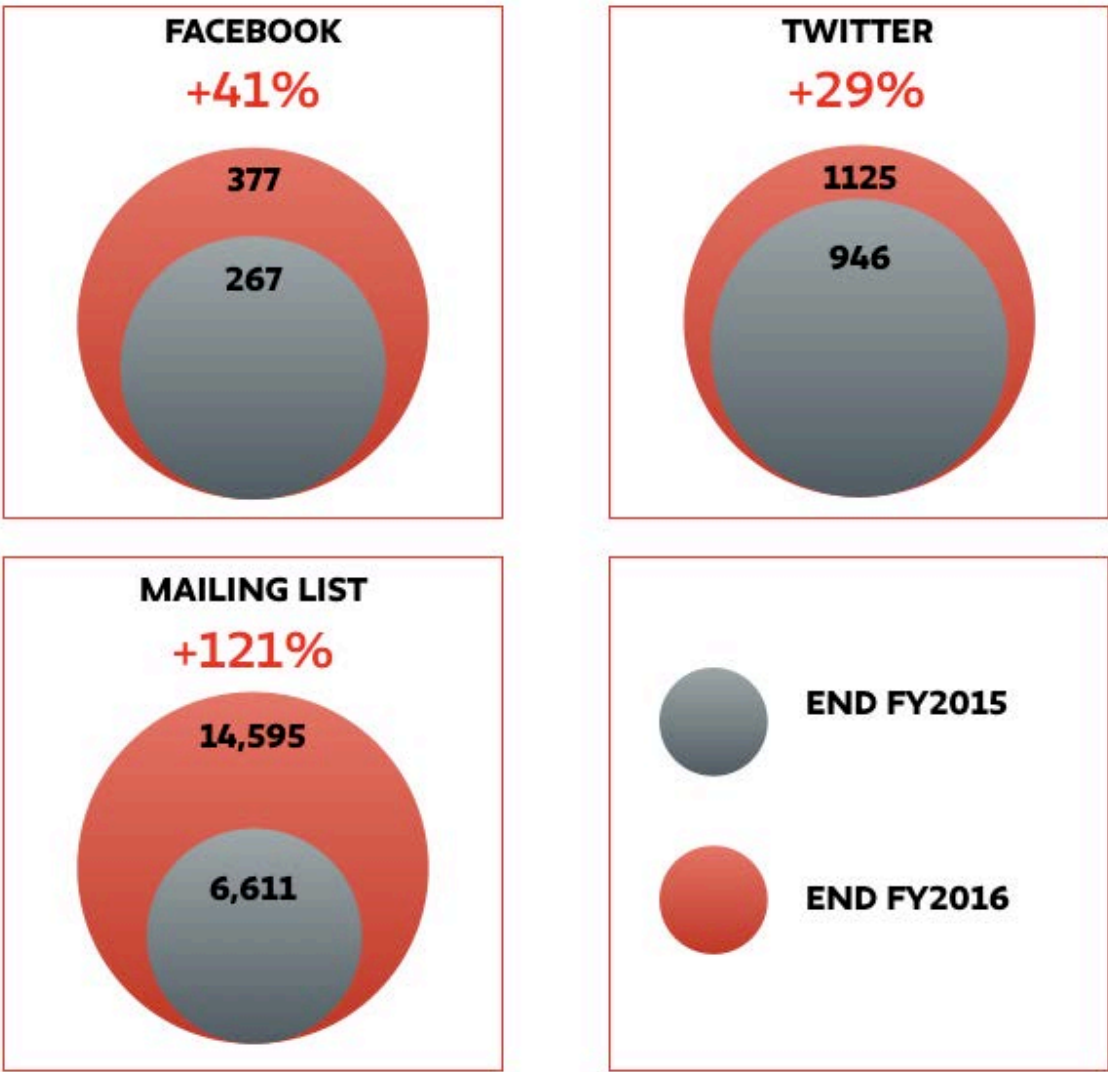
### AFFILIATED FACULTY FEATURED AND QUOTED IN THE PRESS

Date	News Outlet	Article
11/2/16	The Guardian	Live Q&A: How Shall We Plan the Cities of the Future?
11/30/16	Citiscopes	Data Capacity Looms over Implementation of Urban Development Goals
12/1/16	E&E News	Trump Teams Feature Thin Rosters, Mixed Bag on Experience
12/7/16	The New York Times	Why Trump's Use of the Words "Urban Renewal" is Scary for Cities
12/9/16	Mother Nature Network	How to Choose Clothes That Will Last
12/12/16	Green Biz	The Challenges of Diversity in Sustainability Leadership
12/13/16	New American Media	Bias Hinders Diversity in Hiring for Environmental Organizations
12/14/16	City Lab	Environmental Justice Enters its Age of Anxiety
12/20/16	New York Magazine	When Trump's America Doesn't Feel Like Home Anymore
1/13/17	WNYC	Could Trump Administration Undo Toxic Passaic River Fix?
1/16/17	The Mashup Americans	Podcast Ep 34: Preparing for the Fight with Dr. Mindy Fullilove
1/25/17	E&E News	Grant Freeze to be Narrower, Shorter than Expected - Officials
1/25/17	Science Mag	Trump officials Suspend Plan to Delete EPA Climate Web Pages
1/26/17	El Financiero	¿Por qué la ciencia tiene un futuro sombrío con Trump? (Why does science have a bleak future with Trump?)
2/7/17	EdSurge	Beyond the Hype: 5 Ways to Think About Virtual and Augmented Reality in Schools
2/10/17	Goof Food	The Most Important Modern Farmer Might Be The Urban Cowboy
2/13/17	City Lab	The Wastelands of Urban Renewal
2/20/17	Grist	Nearly 8,000 U.S. public schools are plagued by toxic air
2/21/17	El Dario	Gentrificación socava salud de la Gran Manzana (Gentrification undermines health of the Big Apple)
2/22/17	The Carolinian	#NODAPL
2/28/17	The Village Voice	NYC's Climate Research Resources Are Melting Faster Than the Ice Caps
3/17/17	Harpers Magazine	A Feminism for the masses



# SOCIAL MEDIA

As the hub for sustainability engagement on The New School’s campus and an academic ally in the environmental justice movement, the Tishman Center uses social media to raise awareness and spread information about design, policy, and social justice solutions for sustainability and climate issues. This year we have focused on growing our social media audience on campus and in the community to increase dialogue and understanding of the multi/inter-disciplinary nature of environmental challenges, solutions, and justice.



---

**THE  
NEW  
SCHOOL**

---

# TISHMAN ENVIRONMENT AND DESIGN CENTER



**79 5TH AVENUE | NEW YORK, NY 10003  
TISHMANCENTER.ORG | @NEWSCHOOLTEDC | (212) 229-5321**